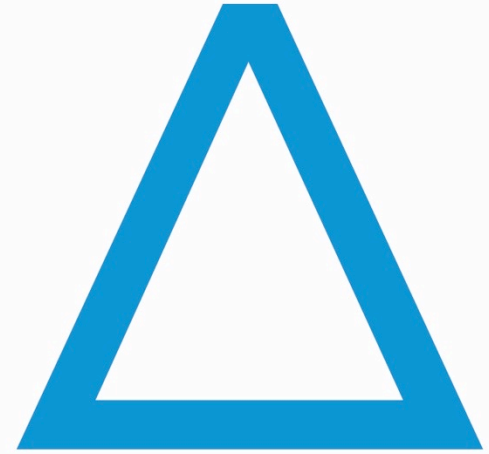


**MEDIA  
PREPARATORS**



**Leading  
Lab Technologies**

**RAYPA**

# Sterilization

## MEDIA PREPARATORS

- [Introduction](#)
- [Features](#)
- [Certifications](#)
- [Accessories](#)
- [More information](#)



# INTRODUCTION

## MANUAL PRODUCTION OF CULTURE MEDIA WITH AUTOCLAVE

### Problems

- Several manual and time-consuming steps
- Compound human error due to several manual steps
- Lack of temperature accuracy during sterilization
- Potentially dangerous: burns
- Lack of homogeneity on final product
- Slow dispensing and not easily scalable
- Lack of process traceability



Manual weighing and dosing



Manual water filling



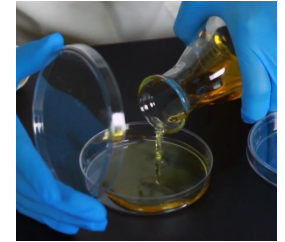
Mixing



Autoclave sterilization



Natural cooling



Manual dispensing

## AUTOMATIC PREPARATION OF CULTURE MEDIA WITH MEDIA PREPARATORS



**4 in 1**

4 processes  
1 equipment

### PREPARATION

- Only 1 weighing
- Adjustable stirring
- Fast heating
- Homogenous

### STERILIZATION

- Accurate
- Heat probe regulation
- Fo sterilization
- Traceable

### COOLING

- Active refrigeration
- Temperature holding
- Safe manipulation

### DISPENSING

- Very fast
- Scalable
- Adjustable dispensing temperature
- Automatic cleaning of dispensing lines



# FEATURES

## MEDIA PREPARATORS

### Main features

- Integration in a single equipment of the preparation, sterilization, cooling and dispensing of culture media.
- Dispensing lines can be cleaned each time with steam pulses.
- Media output per cycle from 18 up to 90L.
- Fast cooling at the end of the cycle.
- Precise dispensing with pedal, delay or optic sensor.
- Faster dispensing with pressure support.

### Applications



Plant Tissue Culture Laboratories



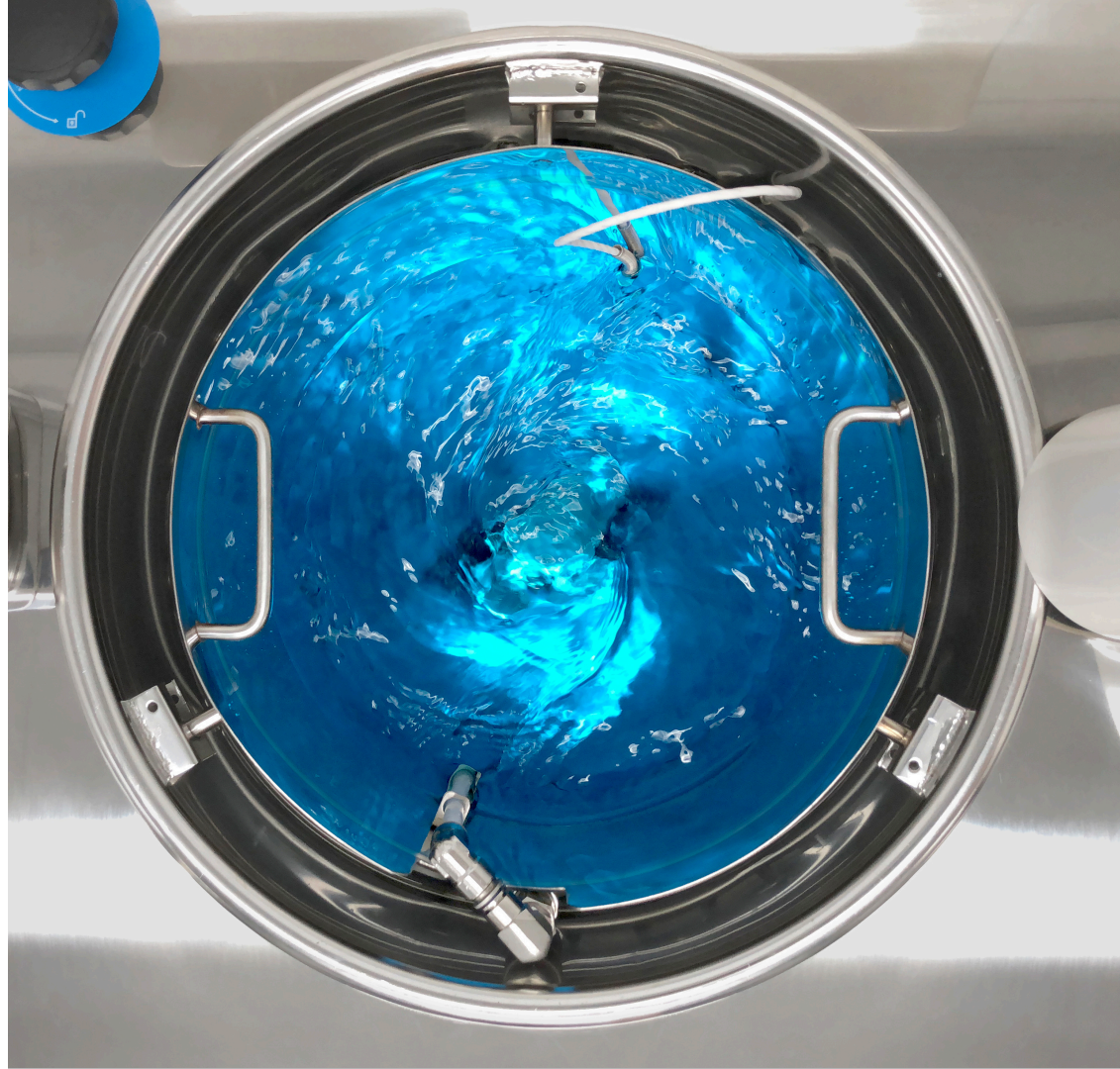
Microbiology



## MEDIA PREPARATORS

### Features

- All the process is controlled by a built-in heart probe to ensure that the media is properly sterilized.
- Adjustable stirring speed with an external independent potentiometer through visual inspection of the vortex.
- Multiple dispensing options via optical sensor, pedal or peristaltic pumps: different tube sizes, single or double peristaltic pumps or pressure support.

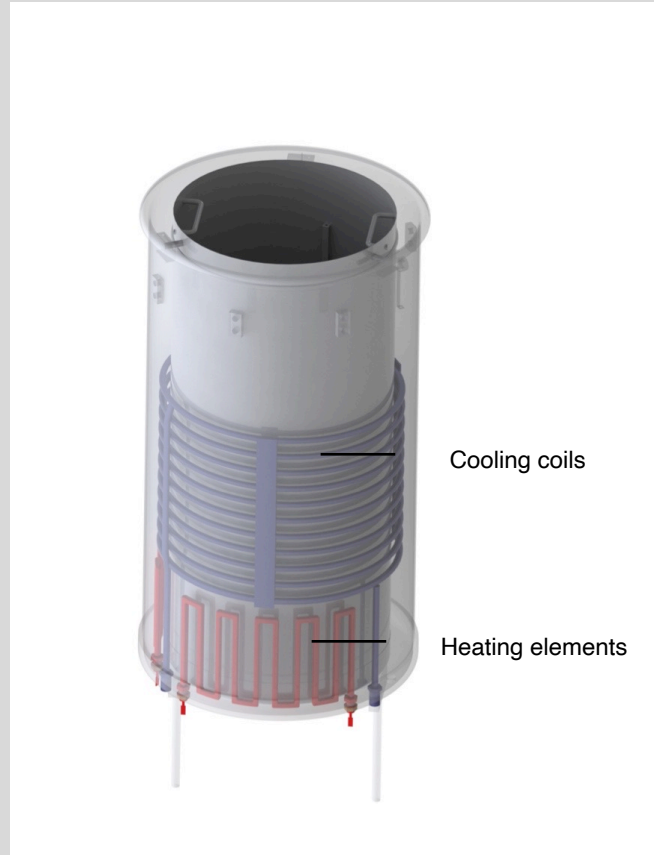




## MEDIA PREPARATORS

### Features

- Integrated preparation, sterilization, cooling and dispensing of culture media.
- Integrated cleaning and disinfection of dosing lines with steam: before, during and after dispensation.
- Control of sterilization with F0 and P0 values, flexible heart probe included.
- Selectable sterilization and dispensing temperatures.
- Several heating capacities upgrades up to 30kW to achieve faster cycles.



## MEDIA PREPARATORS

### More advantages

- Removable magnetic stirrer and vessel for easier cleaning.
- 50 user programs in a 5” touchscreen.
- Traceability: PC and USB connection, built-in printer, admin hierarchy and software.
- Integrated nozzle to dose sensible liquids
- Water feed directly from pressurized purified water network.
- Automatic water level control.



## MEDIA PREPARATORS

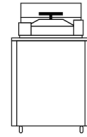
### Media preparation performance



**AE-10-MP**



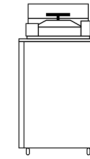
**AE-20-MP**



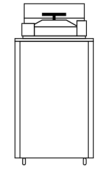
**AE-40-MP**



**AE-60-MP**



**AE-80-MP**



**AE-100-MP**

	<b>AE-10-MP</b>	<b>AE-20-MP</b>	<b>AE-40-MP</b>	<b>AE-60-MP</b>	<b>AE-80-MP</b>	<b>AE-100-MP</b>
<b>Media preparation capacity* Min-Max L</b>	2 - 8	6 - 18	12 - 36	15 - 54	30 - 72	35 - 90
<b>Heating time from 25 to 121°C min</b>	60 - 65	70 - 75	40 - 80	55 - 80	30 - 60	35 - 80
<b>Cooling down time from 121 to 60°C min</b>	10 - 15	15 - 20	15 - 20	15 - 20	20 - 25	20 - 25
<b>Total cycle time min</b>	85 - 100	100 - 115	70 - 120	85 - 120	65 - 105	70 - 125

\*The minimum volume capacity can actually be lower, much lower on larger unit, if we sterilize by  $F_0$



## MEDIA PREPARATORS

### Dispensing performance

	Ø Tube (mm)	Dispensing speed
<b>Dispensing via single peristaltic pump</b>	3,2	7 ml/s
	4	9 ml/s
	4,8	11 ml/s
	6,4	15 ml/s
	8	20 ml/s
<b>Dispensing via double peristaltic pump</b>	3,2	12 ml/s
	4	15 ml/s
	4,8	18 ml/s
	6,4	25 ml/s
	8	33 ml/s
<b>Dispensing via external dispensing station and counterpressure</b>	6,4	65 ml/s (0,6 Bar)
		76 ml/s (0,7 Bar)
		87 ml/s (0,8 Bar)
		94 ml/s (0,9 Bar)

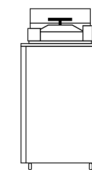
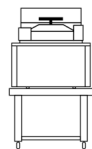
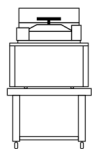


- Dispensing via peristaltic pump can be either manual through pedal or semi-automatic via delay
- The second peristaltic pump is an accessory that can be added later on
- Dispensing via counterpressure and the external dispensing station (DW-MP) can be either manual through pedal or semi-automatic via optic sensor.
- The air compressor is included in AE-60-MP, AE-80-MP and AE-100-MP, on other models it is an accessory.
- The external work station (DW-MP) is an accessory





## MEDIA PREPARATORS



### Models

**AE-10-MP\***
**AE-20-MP**
**AE-40-MP**
**AE-60-MP**
**AE-80-MP**
**AE-100-MP**

	<b>AE-10-MP*</b>	<b>AE-20-MP</b>	<b>AE-40-MP</b>	<b>AE-60-MP</b>	<b>AE-80-MP</b>	<b>AE-100-MP</b>
<b>Exterior dimensions</b> L x D x H mm	615 x 815 x 735	615 x 815 x 735	615 x 815 x 1100	615 x 815 x 1320	755 x 935 x 1285	755 x 935 x 1385
<b>Internal cuvette dimensions</b> Ø x H mm	210 x 236	330 x 236	330 x 461	330 x 696	420 x 594	420 x 734
<b>Power</b> Kw**	3	3	6 or 12	9 or 15	15, 20 or 30	15, 20 or 30
<b>Voltage</b> V***	230 (1P+N+E)	230 (1P+N+E)	400 (3P+N+E)	400 (3P+N+E)	400 (3P+N+E)	400 (3P+N+E)
<b>Current</b> A**	16	16	16	16	32	32
<b>Frequency</b> Hz	50/60	50/60	50/60	50/60	50/60	50/60
<b>Weight</b> Kg	125	128	136	155	245	265

\*Included stainless steel table with casters for AE-10-MP & AE-20MP (LxDxH: 700 x 700 x 600 mm).

\*\*Consult for equipments with enhanced heating capacity.

\*\*\*Consult for other voltages.

# CERTIFICATIONS

## MEDIA PREPARATORS

### Safety features

- Warning and alert messages.
- Door blocking system with positive pressure.
- Open door sensor.
- Water level detector.
- Safety valve.
- Safety thermostat.

### Regulations

- **UNE-EN-ISO 9001:2015** Quality management system.
- **EN-61010-1** Safety requirements for electrical equipment for measurement, control and laboratory use. Part 1: General requirements.
- **EN-61010-2-040** Part 2-040: Requirements for laboratory autoclaves.
- **EN-61326** Electrical equipment for measurement, control and laboratory use. EMC Requirements.
- **AD 2000 Merkblatt** Pressure vessels.
- **2014/35/UE** Low Voltage.
- **2014/30/UE** Electromagnetic Compatibility.
- **2014/68/UE** Pressure equipment.

### Certifications



# ACCESSORIES





## MEDIA PREPARATORS

### Accessories (1/3)



**DW-MP**  
Dosing station for culture media.



**CAB-2**  
Additional peristaltic pump head.



**TUB-DOSIF**  
Dosing tubes set with nozzle:  
3,2 - 4 - 4,8 - 6,4 - 8 mm.



**IT/TS**  
Integrated printer.

## MEDIA PREPARATORS

### Accessories (2/3)



**KLL-MP**  
Automatic water filling kit.



**CP-MP**  
Compressed air system. Already included in models of 60, 80 and 100L.



**SW8000**  
External software for data visualization and report with results.



**ECOPUR-500**  
Eco-efficient water purifier.



## MEDIA PREPARATORS

### Accessories (3/3)



**CAP-MP**  
External probe adapter.



**TR-TR**  
Transport trolley.



**TABLE-MP**  
Stainless steel table.



**MORE INFORMATION**

## MEDIA PREPARATORS

### Videos



### Brochures & Installation guides



**Thank you!**

# RAYPA

**Leading  
Lab Technologies**

[www.raypa.com](http://www.raypa.com) - [www.mediapreparators.com](http://www.mediapreparators.com) - [www.terrafoodtech.com](http://www.terrafoodtech.com)

